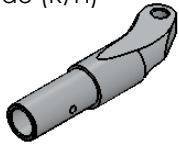
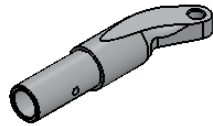


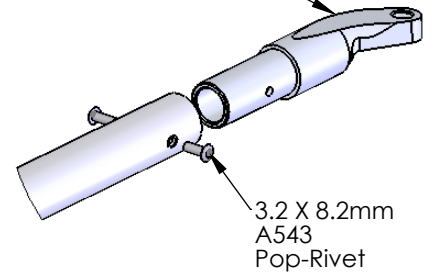
0303BB
Offset Backstay Top Fitting
Stroke Side (R/H)



0303BB
Offset Backstay Top Fitting
Bow Side (L/H)



0303BB
Offset Backstay
Top fitting (Anodised)



0334A
M6 S/S 316 Nut

0327
6mm S/S 316
Spring Washer

0326A
6X12mm S/S 316
Flat Washer

0303E
Backstay nylon
Clamp-cup

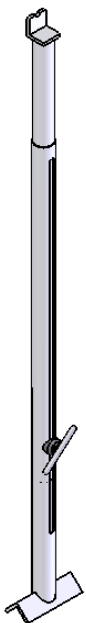
0303CC
19mm Backstay Main Tube
(Anodised)

0303G
Backstay U-Clamp Bolt
M6 S/S 316

0303F
Backstay Telescopic
Base Fitting (Anodised)

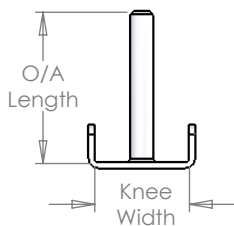
**Backstay Assembly
(Anodised)
0303A**

When ordering a Backstay
Please provide the measurement between the hole centres



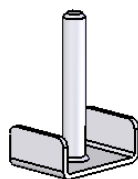
**Boat Rigging Stay
0500**

(For stabilising the boat when
adjusting the pitch on the oarlocks.)

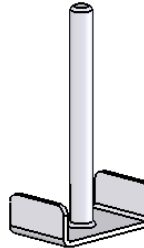


Standard Rigger Bolts
Knee width is required
when ordering.

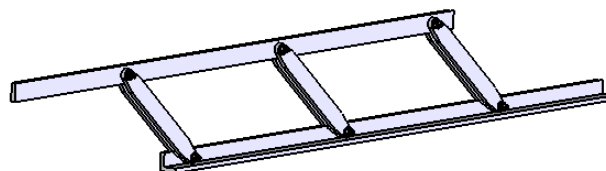
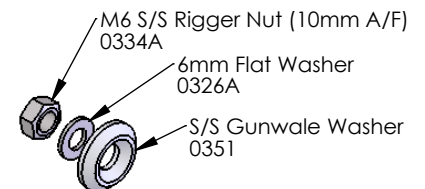
**Rigger Bolt 40 -60mm
0333**



**Rigger Bolt 40 -60mm
0334**



**S/S Gunwale Washer
0351**
(To suit a M6 CSK Screw Head)



**Height Stick / Height Gauge
0510**