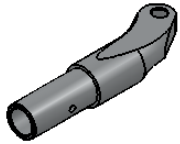
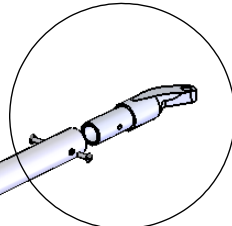
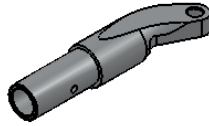


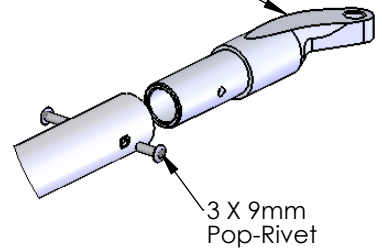
0303BB  
Offset Backstay Top Fitting  
Stroke Side (R/H)



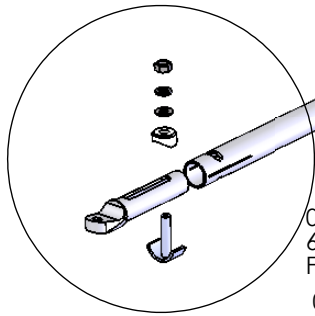
0303BB  
Offset Backstay Top Fitting  
Bow Side (L/H)



0303BB  
Offset Backstay  
Top fitting (Anodised)



3 X 9mm  
Pop-Rivet



0326A  
6X12mm S/S 316  
Flat Washer

0334A  
M6 S/S 316 Nut

0327  
6mm S/S 316  
Spring Washer

0303E  
Backstay nylon  
U-Cap

0303CC  
19mm Backstay Main Tube  
(Anodised)

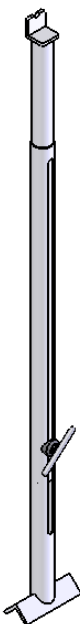
0303G  
Backstay U-Clamp  
M6 S/S 316

0303F  
Backstay Telescopic  
Base Fitting (Anodised)

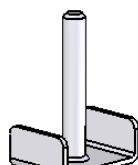


When ordering a Backstay  
Please provide the measurement between the hole centres

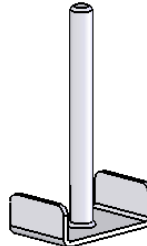
**Backstay Assembly  
0303A**



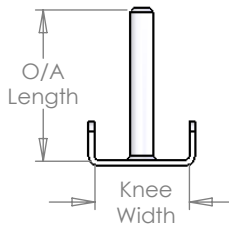
**Boat Rigging Stay  
0500**  
(For stabilising the boat when  
adjusting the pitch on the oarlocks.)



**Rigger Bolt 40 -60mm  
0333**



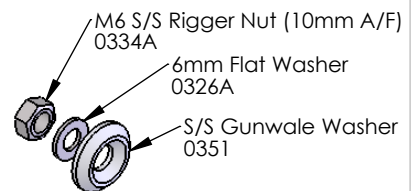
**Rigger Bolt 40 -60mm  
0334**



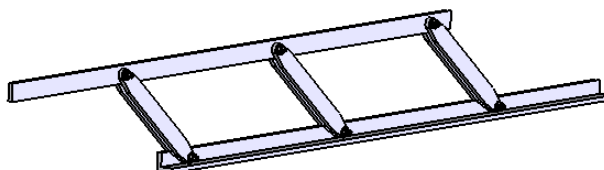
**Standard Rigger Bolts**  
Knee width is required  
when ordering.



**S/S Gunwale Washer  
0351**  
(To suit a M6 CSK Screw Head)



M6 S/S Rigger Nut (10mm A/F)  
0334A  
6mm Flat Washer  
0326A  
S/S Gunwale Washer  
0351



**Height Stick / Height Gauge  
0510**